

Monday, August 29, 2011
9:19 AM



2.1 The
real nu...

Inserted from: <<file:///E:/Algebra 1/Chapter 2/Notes/2.1 The real number line.docx>>

2.1 The Real Number Line

Vocabulary:

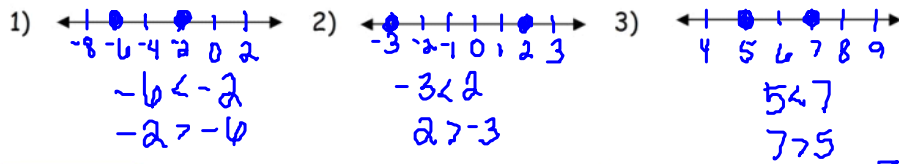
1. Real number line - a line whose points correspond to the real numbers.
2. Positive # - a number greater than 0
3. Negative # - a number less than 0
4. Graph of a # - the point on a number line that corresponds to a number

Example 1: Graph the numbers -2, 0, and 3 on a number line.

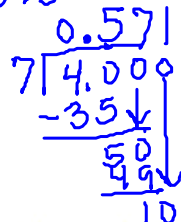


Example 2: Compare -4 and 5 two ways. $-4 < 5$
 $5 > -4$

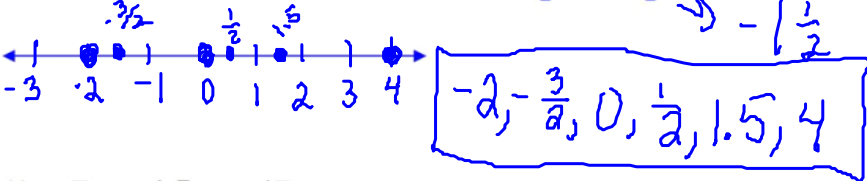
Your Turn: 1 - 3 page 66



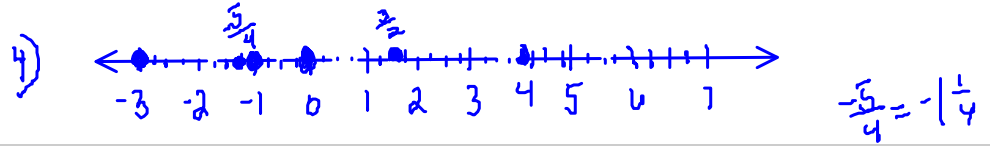
Example 3: Use a number line to compare 0.8 and $\frac{4}{7}$.



Example 4: Order the numbers -2, 4, 0, 1.5, $\frac{1}{2}$, and $-\frac{3}{2}$ from least to greatest.

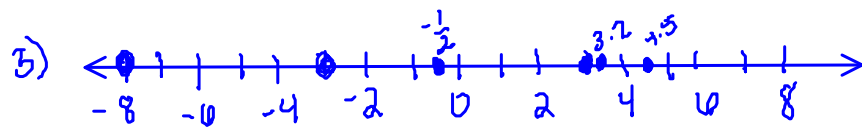


Your Turn: 4-5 page 67



$-3, -\frac{5}{4}, -1, 0, \frac{3}{2}, 4$ $\frac{3}{2} = 1\frac{1}{2}$





$-8, -3, -\frac{1}{2}, 3, 3.2, 4.5$